



## **Connecting to Universal Broadband Wireless for the first time...**

Universal Broadband Wireless is designed to enable almost any laptop to connect to the internet, regardless of its network and IP address settings – at no stage should you need to change your computer's settings however, depending on your equipment there will be variations in how connection is achieved.

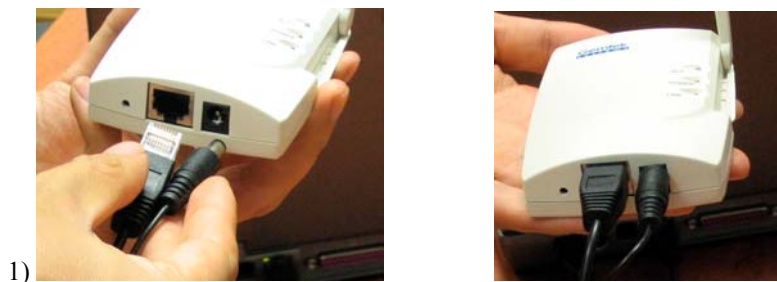
There are two methods for connecting to Universal Broadband Wireless.

- 1) If your laptop does not feature an internal wireless card **OR** you are not comfortable with setting up your wireless connection, please proceed to **section 1** of this document.
- 2) If your laptop does feature an internet wireless card and you are comfortable with connecting to a wireless network, please proceed to **section 2** of this document.

### **Section 1 – Connecting via the external “client device”**

If your laptop does not support an internal wireless card, or you do not wish to alter or change your current wireless settings, you can still connect to Universal Broadband Wireless. By using the external “client device” (**available from reception**), you will be able to connect the system using a standard network cable (*supplied with the client device*).

#### **Step 1 – Connecting the client Device to your Laptop**



1) First, insert the Power Plug & the Network plug into the client device as shown.

2) Then, insert the other end of the cable featuring the USB and Network plugs into your laptop as illustrated below.





**Please Note** – If your USB and Network ports are located a large distance apart on your laptop, simply slide back the toggle on the supplied network cable to provide longer reach.



## Step 2 – Checking the device is connected correctly

When connected to your laptop correctly, the client device should show the following indicator lights:

ACT	= Green
POWER	= Red
LINK	= Amber

The presence of these lights indicates your device is properly connected to your laptop and the wireless service, and is ready to log on to the Internet.

To start using the Internet, all that is required from this point is to open your web browser and enter the username and password found on the rear of your Broadband Access Card (***please refer to section 3 of this document for detailed instruction***).



## **Section 2 – Connecting via your laptop’s internal wireless device**

If your laptop does feature wireless connectivity, and you are comfortable with connecting to a network, connecting to Universal Broadband Wireless is as simple as detecting & logging on to the **universalnetwork** access point.

### **Step 1 – Ensure your wireless is enabled.**

This process will vary depending on the make and model of your laptop. Some laptops will feature an indicator light to advise that your wireless card is enabled, others will feature an icon in the toolbar of your computer screen, and some may feature a physical switch to indicate its operation.

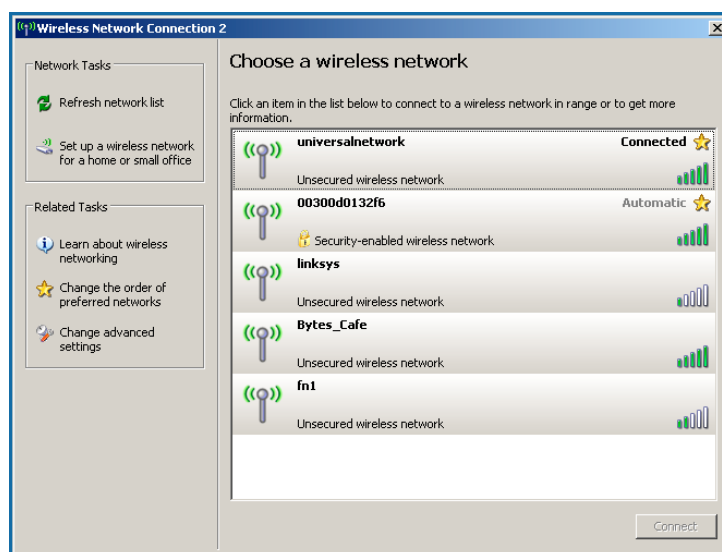
### **Step 2 – Logging on to the ‘universalnetwork’ wireless network**

Due to the large variety of wireless hardware on the market, it is impossible to describe in detail the steps required to connect all types. As the most commonly used format, connection of Windows XP controlled wireless hardware is detailed below.

- 1) Right click the wireless network icon on the system tray and select “view available wireless networks”.



- 2) Select the wireless network ‘**universalnetwork**’ from the list and then click the ‘connect’ button at the bottom right of the ‘choose a wireless network screen’.



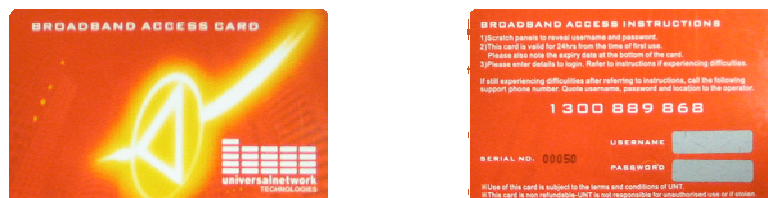


- 3) If you do not see '**universalnetwork**' in the list that appears, click the "refresh network list" at the top left of the '*choose a wireless network screen*'.
- 4) If '**universalnetwork**' still does not appear in the list, it is possible that your wireless card is configured by another program on your computer, is not turned on, or is not compatible (i.e is using Bluetooth or 802.11a etc). In this case we recommend using the external client device available at reception as detailed in section 1 of this document.

Once you have successfully connected to the "universalnetwork" access point, all that is required from this point to start using the Internet is to open your web browser and enter the username and password found on the rear of your Broadband Access Card (***please refer to section 3 of this document for detailed instruction***).

### **Section 3 – Entering your Username and Password**

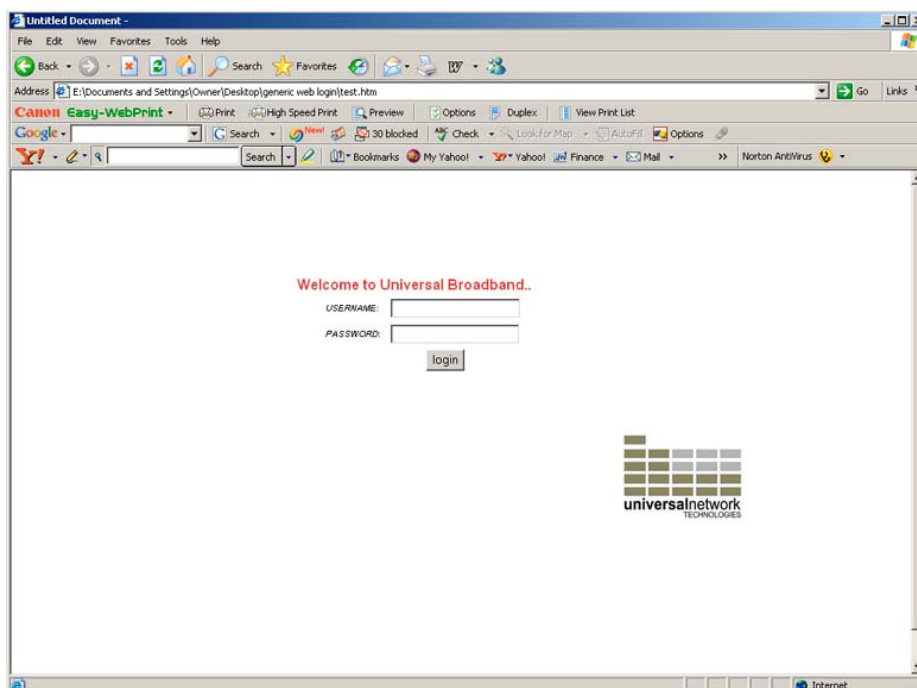
Your individual username and password can be found on the rear of the Broadband Access Card provided to you. To expose the username and password, simply scratch off the silver foil.



*Front and back of the Broadband Access Card*

### **Step 1 – Opening the login screen**

Once you have completed the steps detailed in either section 1 or 2 of this document, open your web browser – regardless of your homepage settings you should now be redirected to the login page similar to the one pictured below.



Lastly, enter your details and 'click' the login button. If you are unable to access the login page, please hit the "refresh" button on your browser.

If you are still experiencing difficulties, please re-check the steps detailed in section 1 or 2 of this document.

If you are still unable to connect, please call the 1300 number on the back of the Broadband Access Card for one of Universal Network's staff to provide further assistance.