



Connecting to Universal Broadband internet for the first time...

The Universal Broadband system is designed to enable almost any laptop to connect to the internet, regardless of its network and IP address settings – at no stage should you need to change your computer's settings however, there are a number of ways in which you may choose to connect.

There are two methods for connecting to the Universal Broadband system.

- 1) Via a DSL broadband modem connected to the telephone line in your hotel room.

OR

- 2) Via the internal wireless card of your laptop whilst in the lobby and reception area of the hotel.

Section 1 – Connecting via broadband modem in your room

The Universal Broadband in-room system is designed to enable you to use both high speed internet and the telephone simultaneously. The DSL modem & telephone cord will be provided to you by the receptionist when you purchase your Broadband Access Card.

Step 1 – Connecting your Broadband modem



1)



2)



3)

- 1) Insert the supplied telephone cord into the telephone outlet in your room.*
- 2) Insert the power plug into the socket on the rear of the DSL modem as illustrated.*
- 3) Insert the other end of the supplied telephone cord into the "LINE" socket of the DSL modem as illustrated.*



- 4) *Insert the Network Cable into the “LAN” Port of the DSL modem as detailed below*
- 5) *Lastly, Insert the other end of the Network Cable into the LAN port of your computer as shown.*



4)



5)

***N.B To use the telephone whilst on the internet, simply plug the cord coming from the telephone into the port on the rear of the DSL modem labelled “PHONE”.**

Step 2 – Checking the device is connected correctly

When connected to your laptop and phone line correctly with the power turned “On”, the DSL modem should show the following indicator lights:

POWER	= Green
LINK	= Yellow
LAN	= Yellow

N.B The yellow link should flash for approximately 2 seconds when power is switched on and then should remain solid to indicate the connections is operational.

The presence of these lights indicates your device is properly connected to your laptop and telephone line, and is ready for you to log on to the internet.

To start using the Internet, all that is required from this point is to open your web browser and enter the username and password found on the rear of your scratch card (***please refer to section 3 of this document for detailed instruction***).



Section 2 – Connecting via your laptop’s internal wireless device in the Reception & Lobby

If you have a wireless enabled laptop, and you are comfortable with connecting to a network, you may also choose to connect to the Universal Broadband service via the ‘hotspot’ available in the reception area.

Step 1 – Ensure your wireless is enabled.

This process will vary depending on the make and model of your laptop. Some laptops will feature an indicator light to advise that your wireless card is enabled, others will feature an icon in the toolbar of your computer screen and some may feature a physical switch to indicate its operation.

Step 2 – Logging on to the ‘universalnetwork’ access point.

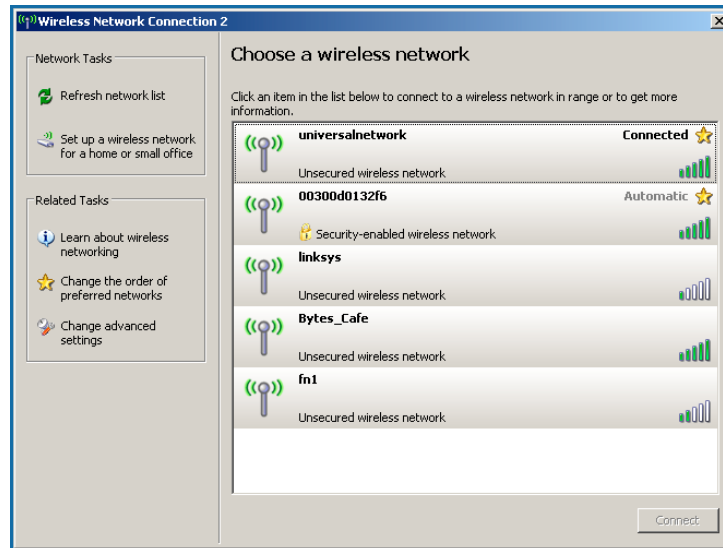
Due to the large variety of wireless hardware on the market, it is impossible to describe in detail the steps required to connect all types. As the most commonly available format, connection of Windows XP controlled wireless hardware is detailed below.

- 1) Right click the wireless network icon on the system tray and select “view available wireless networks





- 2) Select the wireless network '**universalnetwork**' from the list and then click the '**connect**' button at the bottom right of the '*choose a wireless network screen*'.

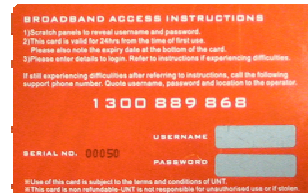


- 3) If you do not see '**universalnetwork**' in the list that appears, select the "refresh network list" at the top left of the '*choose a wireless network screen*'.
- 4) If '**universalnetwork**' still does not appear in the list, it is possible that your wireless card is configured by another program on your computer, is not turned on, or is not compatible (i.e. is using Bluetooth or 802.11a etc).

Once you have successfully connected to the "**universalnetwork**" access point, all that is required from this point to start using the Internet is to open your web browser and enter the username and password found on the rear of your scratch card. (***Please refer to section 3 of this document for detailed instruction***)

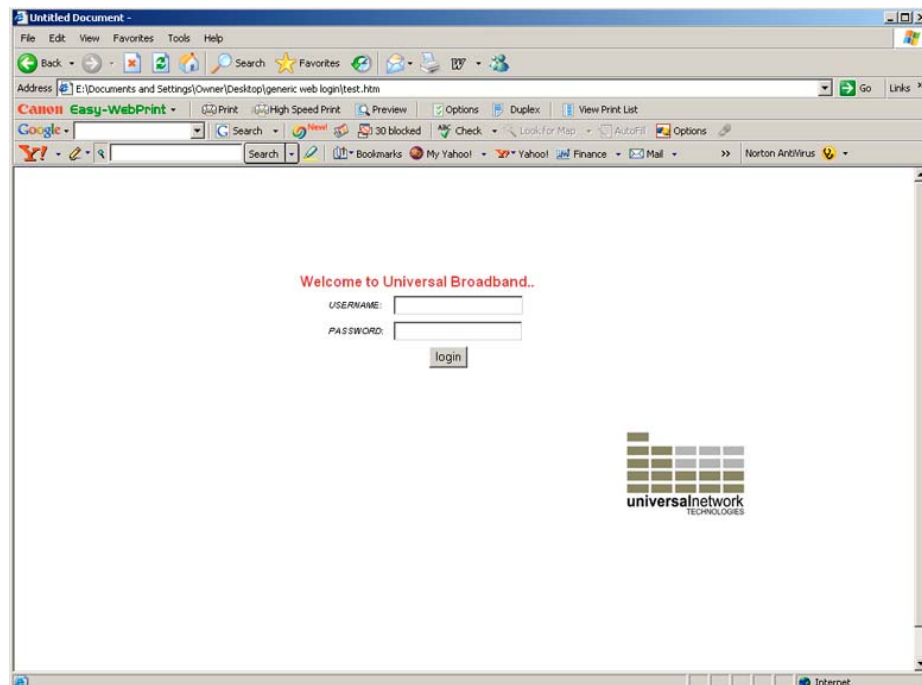
Section 3 – Entering your Username and Password

Your individual username and password can be found on the rear of the Broadband Access Card provided to you by hotel reception. To expose the username and password, simply scratch off the silver foil.



Front and back of the Broadband Access Card

Once you have completed the steps detailed in either section 1 or 2 of this document, open your web browser – regardless of your homepage settings you should now be redirected to the login page similar to the one pictured below.



Lastly, enter your details and ‘click’ the login button. If you are unable to access the login page, please hit the “refresh” button on your browser.

If you are still experiencing difficulties, please re-check the steps detailed in section 1 or 2 of this document.

If you are still unable to connect, please call the 1300 number on the back of the broadband access card for one of Universal Network’s staff to assist you in getting connected.